

# Hoshi's Adventures: THE MYSTIC EXPLORER

If you could travel to any spot on Earth or beyond, where would you go?

I'm Hoshi, and I live on a ship called the *Mystic Explorer*. I help the captain of the *Mystic* go on fantastic expeditions around the globe—and even in outer space! We're always traveling and making new friends, and I love it! We have lots of fun learning

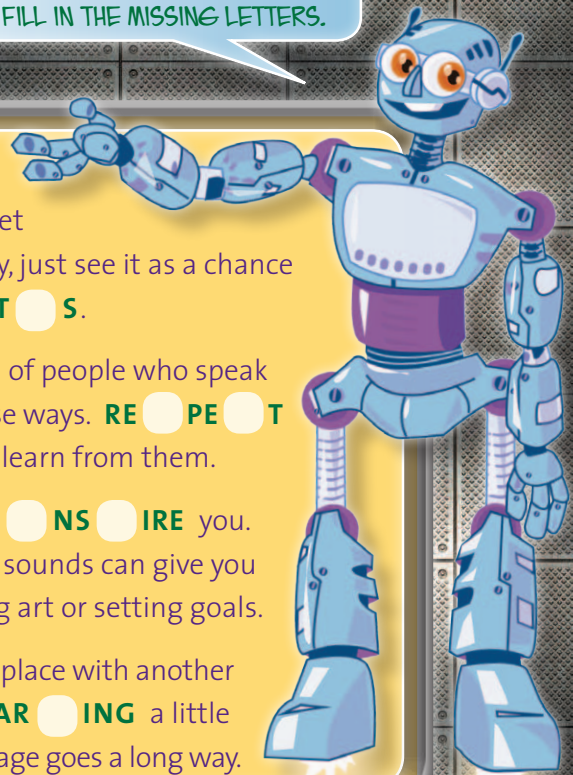
about different cultures and ways of life.

We're inspired by new people, places, and ideas. Sometimes we set off in one direction, then get curious about a different path and veer off course. It's cool to be spontaneous!

Would you like to explore the world with us on the *Mystic*? Welcome aboard! The most important thing to pack is your sense of adventure.

READY FOR SOME FUN TRAVELS? CHECK OUT MY TIPS AND FILL IN THE MISSING LETTERS.

1. Keep an **PEN** mind and follow your curiosity. Discover new things about your destination—and yourself.
2. Be brave and **TRY** out new foods and experiences.
3. Any trip will have a few bumps in the road. Always keep a **POSITVE** attitude.
4. It's great to make plans, but save room for surprises, too. Be **LEIBLE** and enjoy the unexpected.
5. If you're waiting for a plane or stuck in traffic, be **PAIEN** with delays. Find ways to have fun.
6. Even with a map, you may get lost. Don't worry, just see it as a chance to find new **PAT S**.
7. The world is full of people who speak and act in diverse ways. **REPE T** differences and learn from them.
8. Let your travels **NSIRE** you. New sights and sounds can give you ideas for making art or setting goals.
9. When visiting a place with another language, **LAR ING** a little bit of that language goes a long way.



Location > Earth



Location > Iceland > Northern Lights