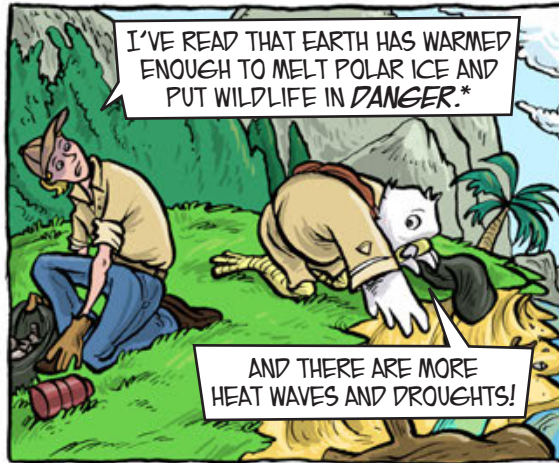


STUART & GABRIELLA: Curious about Climate Change



TRY OUT THIS QUIZ I CREATED FOR MY SCIENCE CLUB. SOME QUESTIONS HAVE *MORE THAN ONE* RIGHT ANSWER.

MAKE A CLIMATE QUIZ DISPLAY FOR YOUR SCHOOL, CLUB, OR SCOUT TROOP.

1. Which of these are likely to contribute to climate change?

- a. Driving gas-burning vehicles
- b. Taking walks and riding bicycles
- c. Burning fuels in power plants

2. Why are some gases called greenhouse gases?

- a. They trap heat in the atmosphere, warming Earth like a greenhouse.
- b. They are made by greenhouses growing green veggies around the world.
- c. They give the air a greenish color.

3. Which of these are greenhouse gases?

- a. Carbon dioxide and oxygen
- b. Carbon dioxide and methane
- c. Methane and oxygen

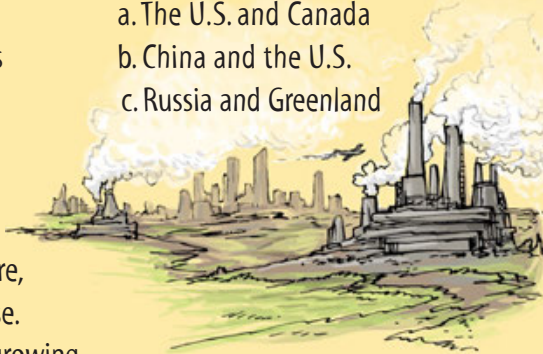
4. Which are used by scientists to study the history of our climate?

- a. Time travel
- b. Rings in tree trunks
- c. Ice core samples



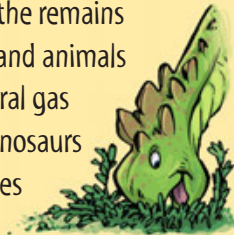
5. Which countries have the highest levels of carbon dioxide pollution?

- a. The U.S. and Canada
- b. China and the U.S.
- c. Russia and Greenland



6. What are fossil fuels?

- a. Fuels made from the remains of ancient plants and animals
- b. Coal, oil, and natural gas
- c. Foods eaten by dinosaurs in prehistoric times

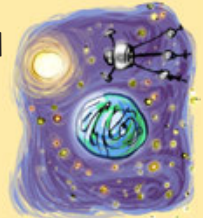


7. About how much of the world's energy comes from fossil fuels, which are limited resources that take millions of years to form?

- a. 20%
- b. 50%
- c. 80%

8. Which of these are likely results of our warming planet?

- a. Increased space travel
- b. Rising sea levels
- c. Changing weather patterns

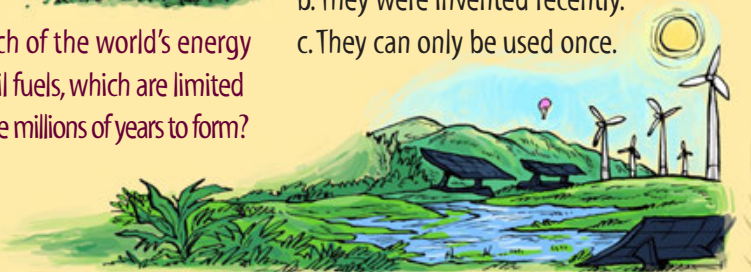


9. How can climate change affect some animals?

- a. They may have difficulty finding food.
- b. Their habitats may change or disappear.
- c. They may become extinct.

10. Why are solar and wind power called renewable resources?

- a. They're replenished by nature and we won't run out of them.
- b. They were invented recently.
- c. They can only be used once.



*On average, Earth has warmed about 1.3°F (0.74°C) in the past century, according to the U.S. Environmental Protection Agency.